

First Floor

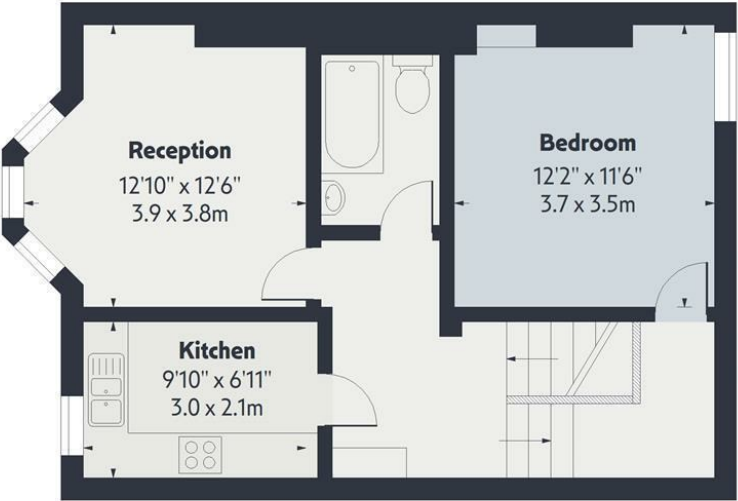
Floor Area 156 Sq Ft - 14.49 Sq M



Measured according to RICS IPMS2. Floor plan is for illustrative purposes only and is not to scale. Every attempt has been made to ensure the accuracy of the floor plan shown, however all measurements, fixtures, fittings and data shown are an approximate interpretation for illustrative purposes only. 1 sq m = 10.76sq feet.

lpaplus.com

Date: 1/5/2025



Second Floor

Floor Area 573 Sq Ft - 53.23 Sq M

Whilst every attempt has been made to ensure the accuracy of the floor plan contained here, measurements of doors, windows, rooms and any other items are approximate and no responsibility is taken for any error, omission or mis-statement. This plan is for illustrative purposes only and should be used as such by any prospective purchaser. The services, systems and appliances shown have not been tested and no guarantee as to their operability or efficiency can be given.



£1,800 Per Month

A superb two double bedroom split-level flat arranged across the upper floors of a handsome Victorian house, situated on a desirable residential street.

Beautifully presented throughout, this bright and spacious property offers a wonderful blend of period charm and modern living. Internally, the flat is in good condition, featuring stripped wooden floorboards, large sash windows that allow for an abundance of natural light, and two well-proportioned double bedrooms. The split-level layout provides a sense of space and privacy, making it ideal for both professionals and small families alike.

The property is located on a popular residential road in the heart of Stoke Newington, within a short distance of Stoke Newington station, as well as numerous regular bus routes. Stoke Newington offers an array of shops and amenities, with Stoke Newington Church Street providing a wonderful selection of fashionable bars, cafes and restaurants. The area is also well served by beautiful open spaces including neighbouring Abney Park, lovely Clissold Park, and the Wetlands.





- TWO DOUBLE BEDROOMS
- SPLIT LEVEL

- STRIPPED FLOORBOARDS

